



PRODUCT CATALOG 2020





Maximize the potential of your excavator with tools and attachments from Viking Equipment. With the right equipment your machine becomes safer to use, more efficient and more flexible to work with. We offer one of the widest ranges of buckets, tiltrotators, quick couplers and a range of other accessories for all types of excavators and backhoe loaders.

Viking Equipment's mission is to supply high tech Swedish steel products to the American market.

SMP Tiltrotators are sold throughout the world, supported by a diversified network of distributors. The company's products are available through e-commerce and independent dealers, who can provide additional application sales and technical service.

Viking Equipment Inc's distribution channel is maintained by SMP Parts facilities located throughout Sweden. These locations provide technical, warehousing and sales & marketing assistance to all of its customers. SMP Parts is an ISO 9001 manufacturer with research and development based in Sweden. The company meets or exceeds most international manufacturing standards and regulations.

Viking Equipment Inc products which are manufactured by SMP Parts are used by a large variety of customers daily. You will see Viking Equipment products in the general construction, railway maintenance, infrastructure projects and the mining industry to mention just a few. Customers rely on Viking Equipment to provide them with consistent and accurate results.

Viking Equipment's mission is to supply high tech Swedish steel products to the American market.

Viking Equipment

We are happy to share our knowledge and experience with you

Viking Equipment Inc
2014 4th St Sarasota
FL 34237

David Esposito
Vice President of North American Operations
david@viking-equipment.com
904.509.6035



CONTENTS

| | |
|---|-------|
| • About Viking Equipment | 2 |
| • SMP VikingWrist ST6 | 4 |
| • SMP VikingWrist ST10 | 5 |
| • SMP VikingWrist ST12 | 6 |
| • SMP VikingWrist ST15 | 7 |
| • SMP VikingWrist ST18 | 8 |
| • SMP VikingWrist ST22 | 9 |
| • SMP VikingWrist ST28 | 10 |
| • SMP VikingWrist Integrated Grab Module | 11 |
| • SMP VikingWrist Valve System/Control System | 12 |
| • SMP MACS ST System | 13 |
| • IDigBest Control System | 14-15 |
| • Hardlock ® Quick Coupler | 16 |
| • Deephoe Buckets Loaders & Mini excavators | 17 |
| • Deep Buckets | 18-20 |
| • Hydraulic Grading Buckets | 21 |
| • Rigid Grading Buckets | 22 |
| • Grading Buckets with minimized corners | 23 |
| • Cable/Narrow Buckets | 24 |
| • Sorting Buckets | 25 |
| • Combi Grip Buckets | 26 |
| • Trench Buckets | 27 |
| • Grading Bucket Loaders | 28-29 |
| • Grading & Ditching Buckets | 30 |
| • Grave Digging & Drainage Buckets | 31 |
| • Riddle Buckets | 32 |
| • Rock Speck & Screening Buckets | 33 |
| • Tilting Ditcher & Turf cutting Buckets | 34 |
| • Concrete Pouring & Trenching Buckets | 35 |
| • Rippers, Asphalt cutters | 36 |
| • Levelling Bar | 37 |
| • Forklifts for Excavators and Loaders | 38 |
| • Hydraulic tree cutter/Tree cutter adapter | 39 |
| • Auger & Clay Spades | 40 |
| • Compaction Plate & Compaction Wheels | 41 |
| • Grapple Demolition specs & Hammer Cradles | 42 |
| • Manual Auto Lock Hitch & Pole Lifter | 43 |
| • Pulverisers & Crushers | 44 |
| • Hydraulic Hitches & Land Rakes | 45 |
| • Rotating Grab & Steel Shear | 46 |
| • Solid Tine Grapple | 47 |
| • Pallet Forks | 48 |
| • Grading Beams & Scraping blades | 49 |
| • Brush Bucket & Bucket Lifter | 50 |



Machines 3 - 6 tonnes

The SMP VikingWrist Improves flexibility and makes the machine more effective. It has grease lubricated gear housing, constant rotation and 40° tilt in all directions. The tiltrotator can be mounted onto the existing quick coupler or directly onto the excavator arm. Easy manoeuvring of the tiltrotator with joystick thumb rollers or rocker switch, allows the operator to easily and effectively perform advanced and precision work without having to move the machine. This also makes the work environment safer for both the operator and those working near the machine

SMP VikingWrist ST6 is supplied with complete hydraulic hoses, hydraulic connections, electric cables, and an installation manual

New features of the SMP VikingWrist Generation 4

Maintenance and productivity

- Improved central lubrication which can also be connected to the machine's central lubrication system.
- Lubrication free bearings which reduce the amount of lubrication points by approximately 50%.

For the user

- We offer a new system based on the CAN Bus platform. This gives a whole new user interface.
- The system is easy and quick to install.
- The operating handle is ergonomically designed with different degrees of functionality.

Safety

- There are integrated load holding valves in the tilt cylinder.
- Attachment bracket with spring locks are used for double the safety in the event of a loss of pressure.



Infinite rotation 360°

Tilting 2x40°

12/24V DC

Grease filled gear housing

Control System

MACST/Pro/P

Valve system

TS-TXSC

Open Source Solution

Pro OS

| Mounting | S40 | S45/S50 | SMP3 |
|----------------------------|---------------------|---------------------|---------------------|
| Approx weight(kg) | 140 | 160 | 160 |
| Dimensions A/B/C/D | 720/495/345/415 | 735/495/375/470 | 740/495/375/470 |
| Tilt angle | 2 x 40° | 2 x 40° | 2 x 40° |
| Rotation | Infinite 360° | Infinite 360° | Infinite 360° |
| Oil flow min/max | 30 / 70 (*80) L/min | 30 / 70 (*80) L/min | 30 / 70 (*80) L/min |
| Operating pressure min/max | 18 / 21 Mpa | 18 / 21 Mpa | 18 / 21 Mpa |
| Tilt Torque at 21 Mpa | 12,33 kNm | 12,33 kNm | 12,33 kNm |
| Torque | 5000 Nm | 5000 Nm | 5000 Nm |
| Rotation speed | 7 sec / rotation | 7 sec / rotation | 7 sec / Rotation |

Machines 6 - 10 tonnes

The SMP VikingWrist Improves flexibility and makes the machine more effective. It has grease lubricated gear housing, constant rotation and 40° tilt in all directions. The tiltrotator can be mounted onto the existing quick coupler or directly onto the excavator arm. Easy manoeuvring of the tiltrotator with joystick thumb rollers or rocker switch, allows the operator to easily and effectively perform advanced and precision work without having to move the machine. This also makes the work environment safer for both the operator and those working near the machine

SMP VikingWrist ST10 is supplied with complete hydraulic hoses, hydraulic connections, electric cables, and an installation manual.

ST10 can be adapted for most machines in the size range and is available with most types of quick coupler systems and with a direct mounted upper/lower section.



New features of the SMP VikingWrist Generation 4

Maintenance and productivity

- Improved central lubrication which can also be connected to the machine's central lubrication system.
- Lubrication free bearings which reduce the amount of lubrication points by approximately 50%.

For the user

- We offer a new system based on the CAN Bus platform. This gives a whole new user interface.
- The system is easy and quick to install.
- The operating handle is ergonomically designed with different degrees of functionality.

Safety

- There are integrated load holding valves in the tilt cylinder.
- Attachment bracket with spring locks are used for double the safety in the event of a loss of pressure.

Technical Specifications Vikingwrist

Infinite rotation 360°

Tilting 2x40°

12/24V DC

Grease filled gear housing

Control System
MACST/Pro/P

Valve system
TS-TXXSC

Open Source Solution
Pro OS

Mounting

S45/S50

SMP3

Approx weight(kg)

260

260

Dimensions A/B/C/D

870/590/430/600

890/640/480/600

Tilt angle

2 x 40°

2 x 40°

Rotation

Infinite 360°

Infinite 360°

Oil flow min/max

30 / 60(*80) L/min

30 / 60 (*80) L/min

Operating pressure min/max

18 / 21 Mpa

18 / 21 Mpa

Tilt Torque at 21 Mpa

20,6 / 25,3 kNm

20,6 / 25,3 kNm

Torque

5000 Nm

5000 Nm

Rotation speed

7 sec / rotation

7 sec / rotation

Machines 8 - 12 tonnes

The SMP VikingWrist Improves flexibility and makes the machine more effective. It has grease lubricated gear housing, constant rotation and 40° tilt in all directions. The tiltrotator can be mounted onto the existing quick coupler or directly onto the excavator arm. Easy manoeuvring of the tiltrotator with joystick thumb rollers or rocker switch, allows the operator to easily and effectively perform advanced and precision work without having to move the machine. This also makes the work environment safer for both the operator and those working near the machine

Available with double-acting cylinders or single-acting telescopic cylinders for tilting.

ST 12 can be adapted for most machines in the size range and is available with most types of quick coupler systems and with a

New features of the SMP VikingWrist Generation 4

Maintenance and productivity

- Improved central lubrication which can also be connected to the machine's central lubrication system.
- Lubrication free bearings which reduce the amount of lubrication points by approximately 50%.

For the user

- We offer a new system based on the CAN Bus platform. This gives a whole new user interface.
- The system is easy and quick to install.
- The operating handle is ergonomically designed with different degrees of functionality.

Safety

- There are integrated load holding valves in the tilt cylinder.
- Attachment bracket with spring locks are used for double the safety in the event of a loss of pressure.

| Mounting | S45/S50 |
|----------------------------|--------------------|
| Approx weight(kg) | 320 |
| Dimensions A/B/C/D | 880/620/435/650 |
| Tilt angle | 2 x 40° |
| Rotation | Infinite 360° |
| Oil flow min/max | 30 / 60(*80) L/min |
| Operating pressure min/max | 18 / 21 Mpa |
| Tilt Torque at 21 Mpa | 24 / 26,2 kNm |
| Torque | 5000 Nm |
| Rotation speed | 7 sec / rotation |



Technical Specifications Vikingwrist ST12

Infinite rotation 360°

Tilting 2x40°

12/24V DC

Grease filled gear housing

Control System
MACST/Pro/P

Valve system
TS-TXXSC

Open Source Solution
Pro OS

Machines 10 - 15 tonnes

The SMP VikingWrist Improves flexibility and makes the machine more effective. It has grease lubricated gear housing, constant rotation and 40° tilt in all directions. The tiltrotator can be mounted onto the existing quick coupler or directly onto the excavator arm. Easy manoeuvring of the tiltrotator with joystick thumb rollers or rocker switch, allows the operator to easily and effectively perform advanced and precision work without having to move the machine. This also makes the work environment safer for both the operator and those working near the machine.

SMP Tiltrotator ST15 is supplied with complete hydraulic hoses, hydraulic connections, electric cables and an installation manual. Available with double-acting cylinders or single-acting telescopic cylinders for tilting.

ST 15 can be adapted for most machines in the size range and is available with most types of quick coupler systems and with a direct mounted upper/lower section.

New features of the SMP VikingWrist Generation 4

Maintenance and productivity

- Improved central lubrication which can also be connected to the machine's central lubrication system.
- Lubrication free bearings which reduce the amount of lubrication points by approximately 50%.

For the user

- We offer a new system based on the CAN Bus platform. This gives a whole new user interface.
- The system is easy and quick to install.
- The operating handle is ergonomically designed with different degrees of functionality.

Safety

- There are integrated load holding valves in the tilt cylinder.
- Attachment bracket with spring locks are used for double the safety in the event of a loss of pressure.



Technical Specifications Vikingwrist ST15

Infinite rotation 360°

Tilting 2x40°

12/24V DC

Grease filled gear housing

Control System
MACST/Pro/P

Valve system
TS-TXXSC

Open Source Solution
Pro OS

| Mounting | S45/S50 | S60 | SMP2,T620 |
|----------------------------|------------------|------------------|------------------|
| Approx weight (kg) | 370 | 390 | 400 |
| Dimensions A/B/C/D | 906/726/465/668 | 934/726/489/706 | 1002/807/560/789 |
| Tilt angle | 2 x 40° | 2 x 40° | 2 x 40° |
| Rotation | Infinite 360° | Infinite 360° | Infinite 360° |
| Oil flow min/max | 40 / 80 L/min | 40 / 80 L/min | 40 / 80 L/min |
| Operating pressure min/max | 18 / 21 Mpa | 18 / 21 Mpa | 18 / 21 Mpa |
| Tilt Torque at 21 Mpa | 24 / 26,2 kNm | 23,4 / 34,1 kNm | 23,4 / 34,1 kNm |
| Torque | 7000 Nm | 7000 Nm | 7000 Nm |
| Rotation speed | 7 sec / rotation | 7 sec / rotation | 7 sec / rotation |

SMP VikingWrist ST18

8

Machines 14 - 18 tonnes

The SMP VikingWrist Improves flexibility and makes the machine more effective. It has grease lubricated gear housing, constant rotation and 40° tilt in all directions. The tiltrotator can be mounted onto the existing quick coupler or directly onto the excavator arm. Easy manoeuvring of the tiltrotator with joystick thumb rollers or rocker switch, allows the operator to easily and effectively perform advanced and precision work without having to move the machine. This also makes the work environment safer for both the operator and those working near the machine.

Available with double-acting cylinders or single-acting telescopic cylinders for tilting.

ST18 can be adapted for most machines in the size range and is available with most types of quick coupler systems and with a direct mounted upper/lower section.

New features of the SMP VikingWrist Generation 4 Maintenance and productivity

- Improved central lubrication which can also be connected to the machine's central lubrication system.
- Lubrication free bearings which reduce the amount of lubrication points by approximately 50%.

For the user

- We offer a new system based on the CAN Bus platform. This gives a whole new user interface.
- The system is easy and quick to install.
- The operating handle is ergonomically designed with different degrees of functionality.

Safety

- There are integrated load holding valves in the tilt cylinder.
- Attachment bracket with spring locks are used for double the safety in the event of a loss of pressure.

| Mounting | S60 |
|----------------------------|------------------|
| Approx weight (kg) | 490 |
| Dimensions A/B/C/D | 920/770/505/810 |
| Tilt angle | 2 x 40° |
| Rotation | Infinite 360° |
| Oil flow min/max | 40 / 80 L/min |
| Operating pressure min/max | 18 / 21 Mpa |
| Tilt Torque at 21 Mpa | 37/46 kNm |
| Torque | 6000 Nm |
| Rotation speed | 7 sec / rotation |



Technical Specifications Vikingwrist ST18

Infinite rotation 360°

Tilting 2x40°

12/24V DC

Grease filled gear housing

Control System
MACST/Pro/P

Valve system
TS-TXXSC

Open Source Solution
Pro OS

Machines 16 - 22 tonnes

The SMP VikingWrist Improves flexibility and makes the machine more effective. It has grease lubricated gear housing, constant rotation and 40° tilt in all directions. The tiltrotator can be mounted onto the existing quick coupler or directly onto the excavator arm. Easy manoeuvring of the tiltrotator with joystick thumb rollers or rocker switch, allows the operator to easily and effectively perform advanced and precision work without having to move the machine. This also makes the work environment safer for both the operator and those working near the machine.

Available with double-acting cylinders or single-acting telescopic cylinders for tilting.

SMP Tiltrotator ST22 is supplied with complete hydraulic hoses, hydraulic connections, electric cables and an installation manual.

New features of the SMP VikingWrist Generation 4

Maintenance and productivity

- Improved central lubrication which can also be connected to the machine's central lubrication system.
- Lubrication free bearings which reduce the amount of lubrication points by approximately 50%.

For the user

- We offer a new system based on the CAN Bus platform. This gives a whole new user interface.
- The system is easy and quick to install.
- The operating handle is ergonomically designed with different degrees of functionality.

Safety

- There are integrated load holding valves in the tilt cylinder.
- Attachment bracket with spring locks are used for double the safety in the event of a loss of pressure.



Technical Specifications Vikingwrist ST22

Infinite rotation 360°

Tilting 2x40°

12/24V DC

Grease filled gear housing

Control System
MACST/Pro/P

Valve system
TS-TXXSC

Open Source Solution
Pro OS

| Mounting | B20/S1 | S60 | SMP2, T620 |
|----------------------------|-------------------|------------------|------------------|
| Approx weight (kg) | 650 | 550 | 620 |
| Dimensions A/B/C/D | 1130/1000/570/850 | 1000/830/600/830 | 1060/910/620/850 |
| Tilt angle | 2 x 40° | 2 x 40° | 2 x 40° |
| Rotation | Infinite 360° | Infinite 360° | Infinite 360° |
| Oil flow min/max | 40 / 80 L/min | 40 / 80 L/min | 40 / 80 L/min |
| Operating pressure min/max | 18 / 21 Mpa | 18 / 21 Mpa | 18 / 21 Mpa |
| Tilt Torque at 21 Mpa | 41 / 52 kNm | 41 / 52 kNm | 41 / 52 kNm |
| Torque | 7000 Nm | 7000 Nm | 7000 Nm |
| Rotation speed | 7 sec / rotation | 7 sec / rotation | 7 sec / rotation |

Machines 22 - 30 tonnes

The SMP VikingWrist Improves flexibility and makes the machine more effective. It has grease lubricated gear housing, constant rotation and 40° tilt in all directions. The tiltrotator can be mounted onto the existing quick coupler or directly onto the excavator arm. Easy manoeuvring of the tiltrotator with joystick thumb rollers or rocker switch, allows the operator to easily and effectively perform advanced and precision work without having to move the machine. This also makes the work environment safer for both the operator and those working near the machine.

SMP Tiltrotator ST28 is supplied with complete hydraulic hoses, hydraulic connections, electric cables and an installation manual. Available with double-acting cylinders or single-acting telescopic cylinders for tilting.

ST28 can be adapted for most machines in the size range and is available with most types of quick coupler systems and with a direct mounted upper/lower section.

New features of the SMP VikingWrist Generation 4

Maintenance and productivity

- Improved central lubrication which can also be connected to the machine's central lubrication system.
- Lubrication free bearings which reduce the amount of lubrication points by approximately 50%.

For the user

- We offer a new system based on the CAN Bus platform. This gives a whole new user interface.
- The system is easy and quick to install.
- The operating handle is ergonomically designed with different degrees of functionality.

Safety

- There are integrated load holding valves in the tilt cylinder.
- Attachment bracket with spring locks are used for double the safety in the event of a loss of pressure.



Technical Specifications Vikingwrist ST28

Infinite rotation 360°

Tilting 2x40°

12/24V DC

Grease filled gear housing

Control System
MACST/Pro/P

Valve system
TS-TXXSC

Open Source Solution
Pro OS

| Mounting | B20/S2 (B27) | S70 | SMP1 |
|----------------------------|-------------------|------------------|-------------------|
| Approx weight (kg) | 760 (840) | 730 | 740 |
| Dimensions A/B/C/D | 1130/1020/570/920 | 1080/920/670/860 | 1120/1040/710/870 |
| Tilt angle | 2 x 40° | 2 x 40° | 2 x 40° |
| Rotation | Infinite 360° | Infinite 360° | Infinite 360° |
| Oil flow min/max | 50 / 100 L/min | 50 / 100 L/min | 50 / 100 L/min |
| Operating pressure min/max | 18 / 35 Mpa | 18 / 35 Mpa | 18 / 35 Mpa |
| Tilt Torque at 21 Mpa | 52,88 kNm | 52,88 kNm | 52,88 kNm |
| Torque | 7000 Nm | 7000 Nm | 7000 Nm |
| Rotation speed | 10 sec / rotation | 7 sec / rotation | 7 sec / rotation |



SMP VikingWrist Integrated Grip Module

11

The SMP Grip Module ensures easy handling when working with posts, poles, timber, paving, or pipe and drain installations. The compact grip module takes up very little space under the tiltrotator and can be easily removed and reattached when needed without affecting the use or connection of the attachment.

The SMP Grip Module has been developed for high durability, strength and lowweight. Thanks to the integrated load holding valves and the gripping synchronization, an even and secure grab function for safe lifting and full control is always ensured.



| Grip Module | Grab sync | Claw opening (mm) | Load(kg) | Approx Weight (kg) |
|------------------|-----------|-------------------|----------|--------------------|
| GM S40 | ✓ | 450 | Max 600 | 40 |
| GM S45/50 | ✓ | 600 | Max 700 | 65 |
| GM S60 | ✓ | 800 | Max 1000 | 130 |
| GM S70 | ✓ | 800 | Max 1000 | 130 |
| GM S1/S2 | ✓ | 800 | Max 1000 | 130 |
| GM SMP1/ SMP2 | ✓ | 800 | Max 1000 | 130 |

SMP VikingWrist Valve System/control system

12

| Control System Properties | Valve System with Directional Valve | | | Control System | | Open Source |
|---|-------------------------------------|---------------------|---|----------------|---------|-------------|
| | TS-TXSC* | TXX-TXXSC (Not ST6) | P | Pro | MACS ST | Pro OS |
| Simultaneous tilt and rotation | √** | √** | √ | √ | √ | √ |
| Simultaneous tilt, rotation and additional hydraulic function | - | - | √ | √ | √ | √ |
| Auxiliary hydraulic function | √ | √ | √ | √ | √ | √ |
| Proportional control system | - | - | - | √ | √ | √ |
| Proportional auxiliary hydraulics | - | - | - | √ | √ | √ |
| Operate proportionally with the control system | - | - | - | √ | √ | √ |
| Hydraulic locks | √ | √ | √ | √ | √ | √ |
| Auto tuning | | | | | √ | - |
| Angle and rotation sensor | | | | | √ | - |
| High flow swivel available | | | | √ | √ | |
| Optimised tools or user profiles | | | | √ | √ | - |
| Available for tracks or wheel steering | | | | √ | √ | - |
| User-friendly interface | | | | | √ | - |
| Open Source - Can be adapted for all control systems | | | | | | √ |

Minimum Machine Requirements

| | | | | | | |
|--|-----|-----|---|-------------|-------------|---|
| Double-acting auxiliary hydraulics | √ | | | | | |
| Two double-acting auxiliary hydraulic circuits | - | √ | - | - | - | |
| Single acting auxiliary hydraulics | - | - | √ | √ | √ | √ |
| Hydraulic locking device | √ | √ | √ | √ | √ | √ |
| Spare buttons/rollers in the handle | 1-2 | 2-3 | 6 | L8 supplied | L8 Supplied | 2 |

*Attachment depends on the hydraulic lock system. Please consult with your SMP contact. **N.B. See the spec below.

| Function | | Double Acting Hydraulic circuits | Seperate Locking Device | Amount of Hoses |
|-----------------------------------|--|----------------------------------|-------------------------|-----------------|
| No Additional Function | | | | |
| TS | Hydraulic valves for changing between tilt and rotation. | 1 | | 2 |
| One Auxiliary Function | | | | |
| TX(S) | Hydraulic valves for changing between tilt and auxiliary hydraulics. Rotation directly connected to machine control valve. | 2 | | 4 |
| TX(CS) | Hydraulic valves for changing between tilt and auxiliary hydraulics. Rotation and locking device directly connected to machine control valve. | 2 | √ | 6 |
| TXSC | Change tilt to auxiliary hydraulics to rotation to locking device. | 1 | | 2 |
| TXS(C) | Valve kits which change between tilt and auxiliary hydraulics and rotation, locking device is directly connected. | 1 | √ | 4 |
| Double Auxiliary Functions | | | | |
| TXX(CS) | Hydraulic valves for changing between tilt and auxiliary hydraulics and auxiliary hydraulics two and locking device. Rotation directly connected to machine control valve. | 2 | √ | 6 |
| TXXC(S) | Hydraulic valves for changing between tilt and auxiliary hydraulics and auxiliary hydraulics two and locking device. Rotation directly connected to machine control valve. | 2 | | 4 |

T=Tilt, S=rotation, X = Auxiliary hydraulic functions, C=Hydraulic locking device, 0 = function is directly connected



- **Easy Installation, no PC required for setup or troubleshooting.**
- **MACS system communicates with the machines control system.**
- **Graphic touchscreen with user friendly interface.**
- **Individual user profiles.**
- **Advanced troubleshooting that provides the driver with problem solving information.**
- **Tracks and wheel steering are optional extras.**
- **Delivered with the popular L8 joystick.**
- **Screen which clearly displays the bucket angle for example.**
- **A smooth and agile control with high precision.**

With MACS ST you can control the tiltrotator's functions. The functions and steering are controlled with joysticks equipped with stepless rollers. The rollers on the handles make it possible to control the functions proportionally, so the speed increases the more you roll them.

The MACS system allows you to operate your tiltrotator more smoothly and with increased flexibility which provides great precision.

With the touch screen, the driver can easily get feedback from the system via a user-friendly interface. The MACS system has several different user profiles that can be programmed to suit different drivers and their choice of tools. The tiltrotator is connected to the excavator's single acting auxiliary hydraulics.





Eliminate Your Labor!

The IDigBest system provides safe, reliable, labor free excavating solutions.

The excavator itself, is now your grade pole. Center, right or left tooth, whichever the conditions call for, the operator is now seeing realtime measurements on screen.

Also, an LED light low on the boom gently guides the operator.

- No guessing or averaging your grade or distances.
- No man in the harm's way. No one to call in sick.
- No mathematical errors. No excuses. Just perfect grade.



3D Grade control

IDigBest has several technological breakthroughs and patented methods to control the bucket.

One crucial component of the system is the high speed triple-gyro bucket sensor with continuous 360 degree roll and tilt. This allows the sensor to measure yaw rates and hold the intended trajectory true.

The roll and tilt ability also further separate this system from all others because now a 3D model can be precisely followed through all rolls and curves of the model; in the same manner as a dozer system.



X-Ray Vision

Once a utility is located, NEVER lose sight of it.

View a detailed outline of the bucket in relation to the utility line on screen in realtime.

The closest point of the bucket to the utility is continuously displayed.

Set a " Safety Zone" to avoid any possible damage. Optional hydraulic kill feature if " Safety Zone" is penetrated by any part of the bucket.

Leading the industry with safer solutions.



IDigBest is dedicated to providing machine control solutions and innovations to the excavating industry.

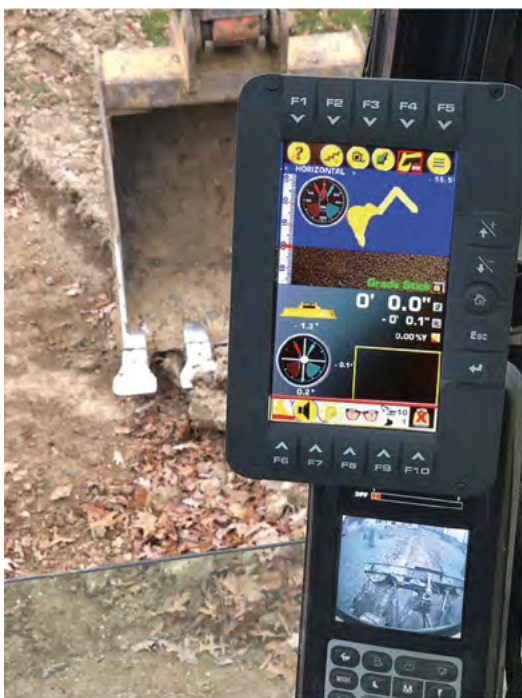
The inspiration for our innovations, come from a life spend behind the joysticks. A lifetime of experiences guides our products.

Our excavator dig system is leading the industry with the only true machine control system. IDigBest steers the bucket to hold grade. What separates us is the "feel" the operator retains.

We deliver the most accurate results with simple 1 touch operations to tackle the most complex job sites. We give the operator all the tools at his fingertips to deliver a finish grade never before possible.

When accuracy and results matter...IDigBest delivers.

For more information visit www.idigbest.com



Reversible

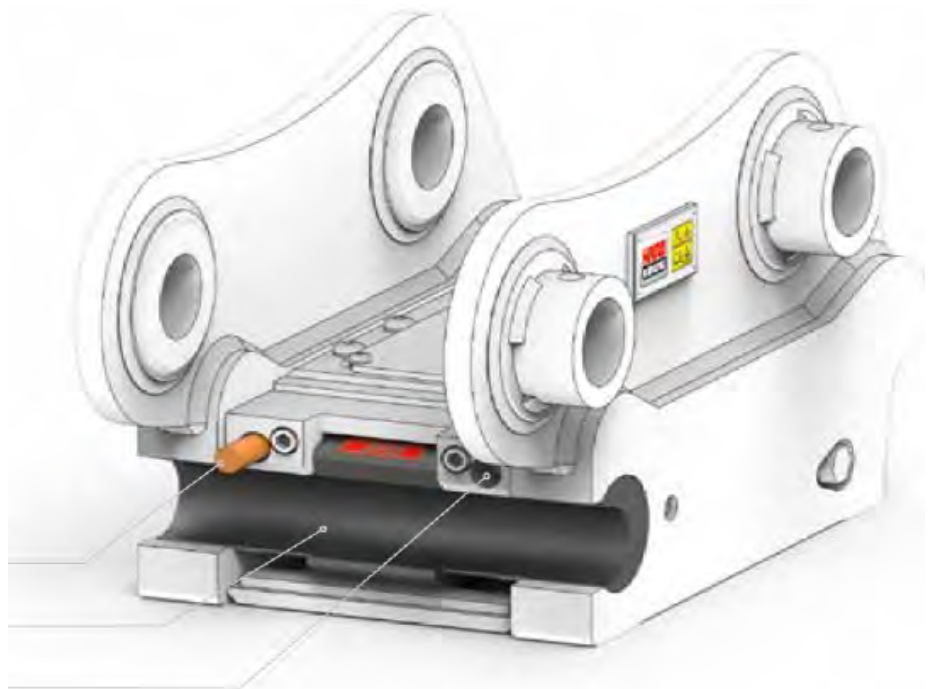
Double locking devices for optimum grip and maximum safety.

SMP's HardLock® Quick Coupler is based on the reversible 'S' models and is designed with double locking devices. HardLock has a standard rear-locking key at the back and also excenter locking securing the front axle, which ensures zero-play and a safe connection for tools and attachments.



| Model | Locking | Machine size (tonne) | Approx weight (kg) |
|-------|-----------|----------------------|--------------------|
| S45 | Hydraulic | 5 - 12 | 85 |
| S50 | Hydraulic | 5 - 13 | 85 |
| S60 | Hydraulic | 12 - 18 | 160 |
| S70 | Hydraulic | 17 - 25 | 280 |
| S80 | Hydraulic | 25 - 40 | 320 |
| S70 | Hydraulic | 35 - 55 | 660 |

A traditional lockable knife wedge system in combination with excenter locking and mechanical front axel locking, ensuring a 100% secure connection



- Rear locking key indicator
- Front excenter locking device
- Front locking key indicator

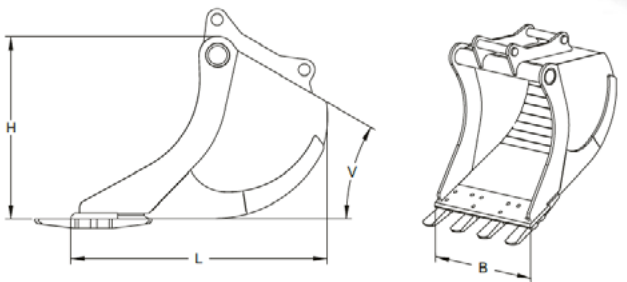
Deep Buckets Backhoe Loaders & Mini Excavators

17

55-400 litres/SAE

A robust and high quality bucket suitable for backhoe loaders and mini excavators, where low weight and a long service life are important.

The bucket is designed for digging in all types of material, regardless of temperature or weather conditions. Deep buckets are available with or without bucket teeth and with an optional tooth system, which are type CAT, KVERNEX, UNI-Z or CATEX as standard.



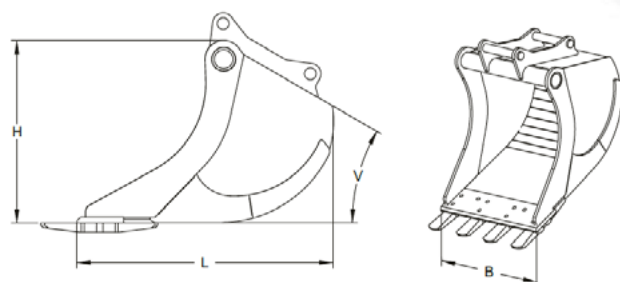
Technical specifications Deep Buckets Mini & Backhoe Loaders

| Model | Volume(l) | Width(mm) | Length(mm) | Height(mm) | Angle | Approx weight (kg) |
|--------|-----------|-----------|------------|------------|-------|--------------------|
| DS 55 | 55 | 500 | 420 | 380 | 30 | 50 |
| DS 85 | 85 | 500 | 640 | 480 | 30 | 65 |
| DS 145 | 145 | 500 | 730 | 630 | 28 | 100 |
| DS 165 | 165 | 600 | 730 | 630 | 28 | 115 |
| DS 200 | 200 | 600 | 790 | 670 | 28 | 135 |
| DS 240 | 240 | 700 | 840 | 670 | 28 | 170 |
| DS 250 | 250 | 700 | 900 | 710 | 28 | 185 |
| DS 265 | 265 | 650 | 935 | 715 | 28 | 195 |
| DS 285 | 285 | 700 | 960 | 715 | 28 | 210 |
| DS 320 | 320 | 800 | 930 | 690 | 30 | 275 |
| DS 370 | 370 | 800 | 1035 | 750 | 30 | 320 |
| DS 385 | 385 | 700 | 1090 | 770 | 30 | 310 |
| DS 400 | 400 | 800 | 1090 | 770 | 30 | 340 |

500-1000 litres/SAE

Durable deep buckets specifically designed for digging in all types of material, regardless of temperature or weather conditions. Deep buckets are available with or without bucket teeth and with optional tooth systems, which are type CAT or KVERNEX as standard. Buckets larger than 2700 L are made to order.

- Tooth system T5 is a CAT-type and is suitable for CAT 225/J350
- Tooth system T10 is a CAT-type and is suitable for CAT 235/J460



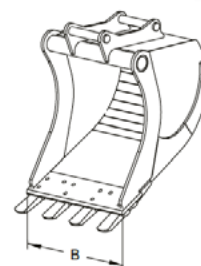
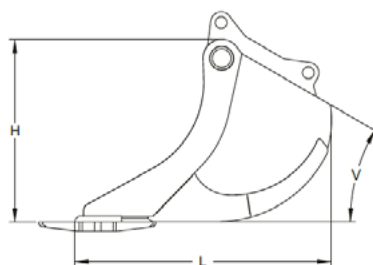
Technical specifications Deep Buckets

| Model | Volume(l) | Width(mm) | Length(mm) | Height(mm) | Angle | Approx weight (kg) |
|---------|-----------|-----------|------------|------------|-------|--------------------|
| 500HDR | 500 | 800 | 1170 | 850 | 25 | 490 |
| 550HDR | 550 | 830 | 1170 | 850 | 25 | 500 |
| 600HDR | 600 | 825 | 1320 | 890 | 25 | 600 |
| 650HDR | 650 | 885 | 1320 | 890 | 25 | 640 |
| 700HDR | 700 | 945 | 1320 | 890 | 25 | 660 |
| 750HDR | 750 | 1000 | 1320 | 890 | 25 | 700 |
| 800HDR | 800 | 1050 | 1320 | 890 | 25 | 720 |
| 850HDR | 850 | 1060 | 1490 | 990 | 25 | 780 |
| 900HDR | 900 | 1160 | 1490 | 990 | 25 | 820 |
| 950HDR | 950 | 1060 | 1430 | 1010 | 25 | 870 |
| 1000HDR | 1000 | 1120 | 1430 | 1010 | 25 | 950 |

1050-2500 litres/SAE

Durable deep buckets specifically designed for digging in all types of material, regardless of temperature or weather conditions. Deep buckets are available with or without bucket teeth and with optional tooth systems, which are type CAT or KVERNEX as standard. Buckets larger than 2700 L are made to order.

- Tooth system T10 is a CAT-type and is suitable for CAT 235/J460



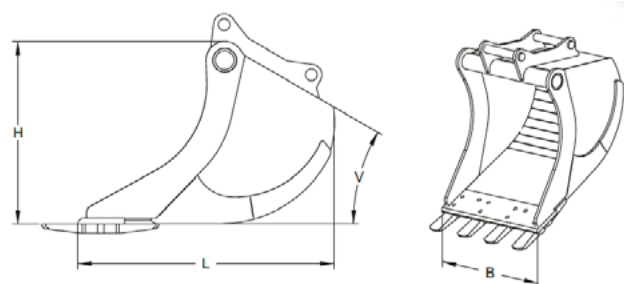
Technical specifications Deep Buckets

| Model | Volume(l) | Width(mm) | Length(mm) | Height(mm) | Angle | Approx weight (kg) |
|---------|-----------|-----------|------------|------------|-------|--------------------|
| 1050HDR | 1050 | 1170 | 1430 | 1010 | 25 | 1060 |
| 1150HDR | 1150 | 1190 | 1450 | 1120 | 25 | 1200 |
| 1250HDR | 1250 | 1260 | 1450 | 1120 | 25 | 1300 |
| 1350HDR | 1350 | 1260 | 1560 | 1100 | 25 | 1380 |
| 1450HDR | 1450 | 1350 | 1560 | 1100 | 25 | 1450 |
| 1550HDR | 1550 | 1440 | 1560 | 1100 | 25 | 1450 |
| 1650HDR | 1650 | 1460 | 1560 | 1190 | 25 | 1640 |
| 1800HDR | 1800 | 1460 | 1700 | 1310 | 25 | 2200 |
| 2000HDR | 2000 | 1600 | 1700 | 1310 | 25 | 2200 |
| 2200HDR | 2200 | 1700 | 1620 | 1290 | 25 | 2500 |
| 2500HDR | 2500 | 1800 | 1700 | 1400 | 25 | 2800 |

2700-4400 litres/SAE

Durable deep buckets specifically designed for digging in all types of material, regardless of temperature or weather conditions. Deep buckets are available with or without bucket teeth and with optional tooth systems, which are type CAT or KVERNEX as standard. Buckets larger than 2700 L are made to order.

- Tooth system T5 is a CAT-type and is suitable for CAT 225/J350
- Tooth system T10 is a CAT-type and is suitable for CAT 235/J460



Technical specifications Deep Buckets

| Model | Volume(l) | Width(mm) | Length(mm) | Height(mm) | Angle | Approx weight (kg) |
|---------|-----------|--|------------|------------|-------|--------------------|
| 2700HDR | 2700 | 1900 | 1620 | 1290 | 25 | 3200 |
| 3000HDR | 3000 | 1900 | 1800 | 1450 | 25 | 3500 |
| 4000HDR | 4000 | according to customer/material specification | | | 25 | |
| 4200HDR | 4200 | according to customer/material specification | | | 25 | |
| 4400HDR | 44000 | according to customer/material specification | | | 25 | |

Weights can vary depending on design of the product

55-2500 litres/SAE, horizontal cylinder 1000-2500 litres/SAE, vertical cylinder

SMP's Grading Buckets have been designed to carry out precision work. A long service life and a robust construction able to withstand tough work and conditions makes the grading buckets ideal for all kinds of grading work.



The buckets have a solid construction with conical edges, minimized corners and a large opening. Horizontal or vertical tilt cylinders, depending on the model, provide maximum stability even at a 45° tilting angle. The angle between the attachment and the bucket bottom optimised for each model, which means that every bucket is highly manoeuvrable and easy to use. The buckets have both a protective cylinder cover and spill guard to protect the important moving parts.

Technical specifications Hydraulic Grading Buckets

| Model | Volume(l) | Width(mm) | Length(mm) | Height(mm) | Angle | Approx weight (kg) |
|---------|-----------|-----------|------------|------------|-------|--------------------|
| SL 55 | 55 | 1000 | 380 | 290 | 40 | 90 |
| SL 80 | 80 | 1000 | 500 | 300 | 40 | 100 |
| SL 110 | 110 | 1000 | 510 | 380 | 25 | 140 |
| SL 150 | 150 | 1050 | 710 | 430 | 30 | 170 |
| SL 210 | 210 | 1200 | 750 | 440 | 30 | 220 |
| SL 230 | 230 | 1300 | 750 | 440 | 30 | 240 |
| SL 300 | 350 | 1300 | 810 | 540 | 25 | 330 |
| SL 350 | 350 | 1300 | 860 | 540 | 30 | 360 |
| SL 400 | 400 | 1500 | 860 | 540 | 30 | 400 |
| SL 450 | 450 | 1500 | 950 | 540 | 30 | 410 |
| SL 500 | 500 | 1500 | 950 | 660 | 15 | 615 |
| SL 650 | 650 | 1500 | 1060 | 710 | 28 | 750 |
| SL 750 | 750 | 1600 | 1060 | 710 | 28 | 790 |
| SL 900 | 900 | 1800 | 1060 | 710 | 28 | 880 |
| SL 1000 | 1000 | 1800 | 1350 | 790 | 28 | 1320 |
| SL 1150 | 1150 | 2000 | 1350 | 790 | 28 | 1420 |
| SL 1400 | 1400 | 2000 | 1260 | 890 | 28 | 1580 |
| SL 1600 | 1600 | 2000 | 1300 | 960 | 28 | 1650 |
| SL 1800 | 1800 | 2400 | 1380 | 850 | 28 | 2150 |
| SL 2200 | 2200 | 2300 | 1680 | 1040 | 25 | 2650 |
| SL 2500 | 2500 | 2500 | 1680 | 1040 | 25 | 3010 |

150-1800 litres/SAE

SMP's Rigid Grading Buckets have been designed to carry out precision work. A long service life and a robust construction able to withstand tough work and conditions makes the grading buckets ideal for all kinds of grading work.

The buckets have a solid construction with conical edges, minimized corners and a large opening. The angle between the attachment and the bucket bottom is optimised for each model, which means that every bucket is highly manoeuvrable and easy to use.



Technical specifications Rigid Grading Buckets

| Model | Volume(l) | Width(mm) | Length(mm) | Height(mm) | Angle | Approx weight (kg) |
|---------|-----------|-----------|------------|------------|-------|--------------------|
| SL 55 | 55 | 1000 | 380 | 290 | 40 | 60 |
| SL 80 | 80 | 1000 | 500 | 300 | 40 | 65 |
| SL 110 | 110 | 1000 | 510 | 380 | 25 | 80 |
| SL 150 | 150 | 1050 | 710 | 430 | 30 | 110 |
| SL 210 | 210 | 1200 | 750 | 440 | 30 | 150 |
| SL 230 | 230 | 1300 | 750 | 440 | 30 | 165 |
| SL 300 | 350 | 1300 | 810 | 540 | 25 | 240 |
| SL 350 | 350 | 1300 | 860 | 540 | 30 | 240 |
| SL 400 | 400 | 1500 | 860 | 540 | 30 | 280 |
| SL 450 | 450 | 1500 | 950 | 540 | 30 | 310 |
| SL 500 | 500 | 1500 | 950 | 660 | 15 | 430 |
| SL 650 | 650 | 1500 | 1060 | 710 | 28 | 485 |
| SL 750 | 750 | 1600 | 1060 | 710 | 28 | 520 |
| SL 900 | 900 | 1800 | 1060 | 710 | 28 | 740 |
| SL 1000 | 1000 | 1800 | 1350 | 790 | 28 | 830 |
| SL 1150 | 1150 | 2000 | 1350 | 790 | 28 | 950 |
| SL 1400 | 1400 | 2000 | 1260 | 890 | 28 | 1080 |
| SL 1600 | 1600 | 2000 | 1300 | 960 | 28 | 1130 |
| SL 1800 | 1800 | 2400 | 1380 | 850 | 28 | 1280 |

Grading Buckets with Minimized Corners

23

150-1800 litres/SAE

SMP's Conical Grading Buckets have been designed to carry out precision work and to be used with the SMP Tiltrotator. A long service life and a robust construction able to withstand tough work and conditions makes the grading buckets ideal for all kinds of grading work.

The buckets have a solid construction with conical edges, minimized corners and a large opening. The conical shape and an angle of 15° between the attachment and the bucket bottom means that every bucket is highly manoeuvrable and easy to use.



Technical specifications Grading buckets with minimized corners

| Model | Volume(l) | Width(mm) | Length(mm) | Height(mm) | Angle | Approx weight (kg) |
|----------|-----------|-----------|------------|------------|-------|--------------------|
| STS 150 | 150 | 1050 | 690 | 430 | 15 | 120 |
| STS 210 | 210 | 1200 | 800 | 450 | 15 | 160 |
| STS 230 | 230 | 1300 | 800 | 450 | 15 | 180 |
| STS 300 | 300 | 1300 | 820 | 540 | 15 | 235 |
| STS 350 | 350 | 1300 | 870 | 580 | 15 | 255 |
| STS 400 | 400 | 1400 | 900 | 600 | 15 | 285 |
| STS 450 | 450 | 1500 | 915 | 600 | 15 | 310 |
| STS 500 | 500 | 1500 | 1000 | 640 | 15 | 430 |
| STS 650 | 650 | 1500 | 1270 | 730 | 15 | 500 |
| STS 750 | 750 | 1600 | 1270 | 730 | 15 | 530 |
| STS 800 | 800 | 1700 | 1270 | 730 | 15 | 570 |
| STS 900 | 900 | 1800 | 1270 | 850 | 15 | 640 |
| STS 1000 | 1000 | 1800 | 1350 | 850 | 15 | 790 |
| STS 1150 | 1150 | 2000 | 1350 | 850 | 15 | 950 |
| STS 1250 | 1250 | 2000 | 1440 | 850 | 15 | 1020 |
| STS 1400 | 1400 | 2000 | 1510 | 910 | 15 | 1050 |
| STS 1600 | 1600 | 2000 | 1510 | 980 | 15 | 1100 |
| STS 1800 | 1800 | 2000 | 1740 | 1050 | 15 | 1280 |

30-800 litres/SAE

SMP's durable Cable and Narrow buckets are specially designed for digging in narrow trenches and for cable laying. The buckets are ideal for carrying out precision work and are developed for digging in all types of material, regardless of temperature and weather conditions.

The buckets are available with or without bucket teeth and an optional tooth system with type CAT, KVERNEX UNI-Z or CATEX as standard.



Technical specifications Cable/Narrow buckets

| Model | Volume(l) | Width(mm) | Length(mm) | Height(mm) | Angle | Approx weight (kg) |
|--------|-----------|-----------|------------|------------|-------|--------------------|
| KS 30 | 30 | 250 | 500 | 400 | 30 | 30 |
| KS 55 | 55 | 300 | 770 | 470 | 20 | 50 |
| KS 80 | 80 | 300 | 890 | 560 | 20 | 75 |
| KS 110 | 110 | 400 | 910 | 560 | 20 | 100 |
| KS 120 | 120 | 300 | 1100 | 660 | 20 | 125 |
| KS 155 | 155 | 400 | 1100 | 660 | 20 | 150 |
| KS 220 | 220 | 400 | 1280 | 890 | 30 | 250 |
| KS 350 | 350 | 550 | 1460 | 930 | 20 | 400 |
| KS 550 | 550 | 600 | 1600 | 1000 | 25 | 540 |
| KS 800 | 800 | 700 | 1700 | 1120 | 25 | 740 |
| KS 950 | 950 | 800 | 2000 | 1190 | 25 | 1300 |

Weights can vary depending on design of the product

55-1800 litres/SAE

Sorting Buckets have been designed for effective sorting through unwanted material such as soil, brick, rock or rubble.

SMP's sorting buckets have a robust construction with ribs made from durable reinforced steel bars. With the same design as SMP grading buckets Sorting Buckets have been designed for effective sorting through unwanted material such as soil, brick, rock or rubble.



Technical specifications Sorting Buckets

| Model | Volume(l) | Width(mm) | Length(mm) | Height(mm) | Angle |
|---------|-----------|-----------|------------|------------|-------|
| GS 55 | 55 | 1040 | 400 | 300 | 15 |
| GS 80 | 80 | 1000 | 480 | 300 | 15 |
| GS 110 | 110 | 1000 | 570 | 380 | 15 |
| GS 150 | 150 | 1000 | 730 | 440 | 15 |
| GS 210 | 210 | 1200 | 730 | 440 | 15 |
| GS 300 | 300 | 1300 | 790 | 510 | 15 |
| GS 350 | 350 | 1300 | 830 | 550 | 15 |
| GS 400 | 400 | 1500 | 830 | 550 | 15 |
| GS 500 | 500 | 1500 | 1020 | 700 | 15 |
| GS 650 | 650 | 1500 | 990 | 710 | 15 |
| GS 750 | 750 | 1600 | 990 | 710 | 15 |
| GS 900 | 900 | 1800 | 990 | 710 | 15 |
| GS 1000 | 1000 | 1800 | 990 | 790 | 15 |
| GS 1150 | 1150 | 2000 | 1300 | 790 | 15 |
| GS 1250 | 1250 | 2000 | 1300 | 890 | 15 |
| GS 1400 | 1400 | 2000 | 1300 | 930 | 15 |
| GS 1600 | 1600 | 2000 | 1300 | 930 | 15 |
| GS 1800 | 1800 | 2400 | 1340 | 850 | 15 |

350-1000 litres/SAE

Combi Grip Buckets are a combination of grading and grip buckets. A robust construction ensures a long service life and the ability to withstand tough work and conditions. They are perfect for moving larger objects that normally wouldn't fit into a bucket.

Combi Grip Buckets can be used with the SMP Tiltrotator for precision work such as building walls with natural stone. Thanks to its clever design the grip arm never comes into contact with the excavator arm, when the bucket is fully tilted, in transport position.



| Model | Volume(l) | Width(mm) | Approx Weight(kg) |
|---------|-----------|-----------|-------------------|
| CG 200 | 200 | 600 | 250 |
| CG 350 | 350 | 800 | 420 |
| CG 500 | 500 | 860 | 650 |
| CG 650 | 650 | 1000 | 1000 |
| CG 1000 | 1000 | 1100 | 1400 |

500-1000 litres/SAE

Lightweight, strong and sturdy Trench Buckets for digging water pipe and sewage trenches. The bucket is specially designed for precision work in combination with the SMP VikingWrist.

With a long service life and a robust construction made from Hardox steel, the Trench Buckets are able to withstand tough work and conditions, making them ideal for all types of trench work. A 20° angle between the bottom of the bucket and the attachment means that each trench bucket is very easy to manoeuvre and use.



| Model | Volume(l) | Width(mm) | Length(mm) | Height(mm) | Angle | Approx Weight |
|---------|-----------|-----------|------------|------------|-------|---------------|
| VA 500 | 500 | 700 | 1460 | 930 | 20 | 420 |
| VA 600 | 600 | 800 | 1460 | 930 | 20 | 500 |
| VA 700 | 700 | 900 | 1460 | 930 | 20 | 580 |
| VA 800 | 800 | 1000 | 1730 | 1100 | 20 | 650 |
| VA 900 | 900 | 900 | 1730 | 1100 | 20 | 720 |
| VA 1000 | 1000 | 1000 | 1730 | 1100 | 20 | 790 |

Plain Front/Blade Tooth

1. Cutting edge

Bucket teeth are welded onto the cutting edge that matches the existing tooth pattern on the bucket. The complete cutting edge kit is fitted to the bucket and secured by a locking device. To change the bucket back into a digging bucket with teeth, the cutting edge can be taken off and bucket teeth can be re-mounted.

2. Blade tooth

Bucket teeth are welded onto a blade. The blade is then mounted onto the buckets existing teeth and secured by a locking device. To change the bucket's back into a digging bucket with teeth, the cutting edge can be taken off and bucket teeth can be re-mounted.

3. Kvernex System

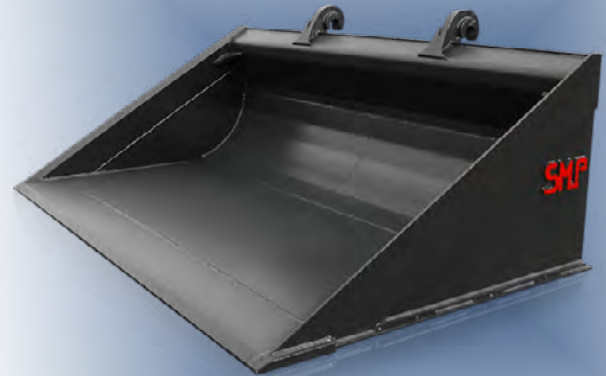
Kvernex's own unique system for cutting edges on buckets. Two holders are welded onto the underside of a cutting edge. The holders and the cutting edge are then mounted from underneath and screwed into the buckets original cutting edge. The existing bucket teeth act as a support for the cutting edge.

Heavy Duty

Heavy Duty Grading Buckets are designed for precision work with wheel loaders in the 11-31 tonne weight class. A long service life and a robust construction makes them ideal for all types of grading work with a machine in the higher weight class range.

The Heavy Duty Grading Bucket has a long, smooth underside made from high quality steel. It has strong side cutters and a high straight rear edge. The smooth and solid design makes this bucket easy to manoeuvre and simple to use.

Viking Equipment can customise buckets based on the standard models and the customers' needs and wishes. All models can be equipped with a height extension snow collar. This increases the volume handling capabilities, which can be useful when clearing snow.



| Model | Width(mm) | Depth(mm) | Approx Weight(kg) | Front Steel(mm) | Machine size (tonne) |
|-----------|-----------|-----------|-------------------|-----------------|----------------------|
| FPL 260HD | 2600 | 1530 | 1110 | 30 x 270 | 11 - 13 |
| FPL 270HD | 2700 | 1530 | 1200 | 30 x 270 | 13 - 15 |
| FPL 280HD | 2800 | 1530 | 1280 | 30 x 270 | 20 |
| FPL 290HD | 2900 | 1530 | 1280 | 30 x 270 | 20 |
| FPL 300HD | 3000 | 1530 | 1280 | 30 x 270 | 20 |
| FPL 310HD | 3100 | 1530 | 1350 | 30 x 270 | 20 - 23 |
| FPL 340HD | 3400 | 1930 | 2150 | 40 x 300 | 23 |

Front steel side cutters 20x200 FPL 260HD, 270HD, 290HD, 300HD. Front steel side cutters 25x200 FPL 340HD. Steel wear ribs in the bottom. Slitribbor i botten. Weights can vary depending on design of product

Standard

Grading Buckets are designed for precision work with wheel loaders in the 4-20 tonne weight class. A long service life and a robust construction make them ideal for all types of grading work. The standard bucket has a stable, smooth and solid design, which is easy to manoeuvre, and simple to use.

Viking equipment can customize buckets based on the standard models and the customers' needs and wishes. All models can be equipped with a height extension snow collar. This increases the volume handling capabilities, which can be useful when clearing snow



| Model | Width(mm) | Depth(mm) | Approx Weight(kg) | Front Steel(mm) | Machine size (tonne) |
|---------|-----------|-----------|-------------------|-----------------|----------------------|
| FPL 200 | 2000 | 1230 | 680 | 25 x 200 | 4 - 5 |
| FPL 220 | 2200 | 1230 | 750 | 25 x 200 | 6 - 8 |
| FPL 230 | 2300 | 1230 | 780 | 25 x 200 | 8 - 10 |
| FPL 240 | 2400 | 1430 | 810 | 25 x 200 | 9 - 10 |
| FPL 250 | 2500 | 1430 | 850 | 25 x 2200 | 11 - 12 |
| FPL 260 | 2600 | 1430 | 880 | 25 x 200 | 11 - 13 |
| FPL 270 | 2700 | 1430 | 920 | 25 x 200 | 13 - 15 |
| FPL 280 | 2800 | 1600 | 950 | 30 x 270 | 18 - 20 |
| FPL 290 | 2900 | 1600 | 980 | 30 x 270 | 20 |
| FPL 300 | 3000 | 1600 | 1020 | 30 x 270 | 20 |

Standard > Bottom plate T=10 + hard plate steel. Option > Bottom plate T=15 Hardox 450 without hard plate steel.
Weights can vary depending on design of product

Keen Attachments manufacture a broad range of ditching / grading buckets in all different sizes ranging from 24 to 110 inches, covering machines from 0.75 tonne to 60 tonne. These buckets are used for grading/levelling, loading and general handling.

In addition to our standard bucket sizes, we also offer a bespoke and customisation service where we build buckets tailored to your specification.



Bagging Bucket

Keen Attachments bag filling bucket is the ultimate time saving attachment for use in busy yards. It allows the quick fill of 1 ton bags with heavy free flowing material such as sand, aggregate, gravel, wood chip etc.

To be used with any telehandler or loader, trailers and vans can also be filled with precise control.

The design means that when bags are filled they can be accurately stacked or loaded onto trailers and trucks.



Drainage Bucket

31

Keen Attachments Trapezoidal Bucket (also known as a V or tile drain bucket) is suitable for digging drains in wet ground conditions.

The standardised 'V' shape design is also ideal for forging or cleaning channels and will fit most excavators from 0.75 tonne to 50 tonne with an optional open or closed back.



Grave Digging Bucket

Keen Attachments grave digging buckets are designed and built to dig a square hole with minimal movement from the excavator and removal of material from the ground.

Standard grave digging buckets are typically between 18 to 30 inches wide, but Keen Attachment delivers a customized service, building buckets tailored to your needs.



Well suited to rocky soils, Keen Attachments riddle buckets are manufactured to work with machines from 0.75 tonne to 60 tonne, with various sizes from 24 to 72 inches. Spacing of tines can be tailored to suit your application.

Keen Attachments riddle buckets can be customised in several areas, including gap width, backs (profiled or ribbed) and pins (either 'weld in' or 'on'), with Klac options also available.



Rake Riddle Bucket

Keen Attachments manufacture Rake/Riddle buckets in various widths and sizes for all excavators ranging from 0.5 tonne to 50 tonne.

Manufactured from hard wearing materials in a variety of tine of spaces for all applications.

These are the perfect tool for landscape clearance as they give you the option to rake, riddle and clear all stones in one movement.

This model also comes in a tilting option that allows the user to angle the bucket 45 degrees either side.



Keen Attachments rock spec buckets feature a heavy duty design, ideal for handling rocks, concrete and debris, manoeuvring bulky materials with great ease. Available from 7 to 60 tonne as standard

Rock buckets are manufactured to include your choice of wear parts, but are provided with heel shrouds, lip protectors, hardox edges and protection where needed as standard.



Screening Bucket

Due to the continuous increase in the recycling field and recovery of the different materials, Keen Attachments are able to supply screening buckets ranging from 3.5 to 30 tonne.

With their easy and intuitive use, the SBV screening bucket is ideal for reclaiming land with stones, selecting stones and gravel in rivers, cleaning beaches, selecting materials in demolition yards or moving earth to cover pipelines and canalizations.

An essential advantage is the ability to replace only some of the steel grates which are resistant to abrasions. These replacements can be carried out directly in the worksite. With this equipment it is possible to re-use materials avoiding the purchase of new materials which can usually be expensive.



Tilting Ditcher Bucket

34

Keen Attachments manufacture tilting ditchers in a variety of widths and capacities. We produce buckets to suit excavators from 0.75 tonne to 30 tonne.

We can provide single or double acting ram depending on the size of the tilting ditcher. From 24 inches wide to 96 inches wide. The optional top protection guard can prevent damage.

Simple and robust construction with the single/double acting ram providing 45 degrees of tilt whilst the main pivot has a greasable pin.



Turf Cutting Bucket

Keen Attachments turf cutting bucket is designed with a scoop for maximum fill capacity when loading and prevents turf 'sticking' when unloaded.

Keen Attachments turf bucket will fit any excavator from 0.75 tonne to 30 tonne.



Concrete Pouring Bucket

35

Keen Attachments Manufacture concrete pouring buckets to suit excavators ranging from 6 tonne to 20 tonne.

We can offer in a variety of capacities depending on customer requirements. This product is perfect for foundation pouring.



Digging and Trenching Bucket

Keen Attachments manufacture a broad range of digging buckets from the Micro Range up to 60 tonne excavators.

Standard bucket sizes are listed below. Keen Attachments offers a customised service building buckets tailored to your specifications.



| Size (tonnes) | 6" | 9" | 12" | 18" | 24" | 30" | 36" | 42" | 48" | 54" | 60" | 66" | Depth (mm) | Height (mm) | Breadth (mm) |
|---------------|----|----|-----|-----|-----|-----|-----|-----|-----|-----|-----|-----|------------|-------------|--------------|
| 0,75 | * | * | * | * | * | | | | | | | | 380 | 290 | 410 |
| 1-2 | * | * | * | * | * | * | | | | | | | 530 | 350 | 550 |
| 2-3 | | * | * | * | * | * | * | | | | | | 640 | 440 | 610 |
| 3-4 | | * | * | * | * | * | * | | | | | | 710 | 500 | 720 |
| 4-6 | | * | * | * | * | * | * | | | | | | 830 | 600 | 860 |
| 6-7 | | | * | * | * | * | * | * | * | | | | 980 | 730 | 890 |
| 7-8 | | | * | * | * | * | * | * | * | | | | 1000 | 760 | 910 |
| 13 | | | | * | * | * | * | * | * | | | | 1350 | 880 | 1250 |
| 15 | | | | * | * | * | * | * | * | * | | | 1410 | 990 | 1395 |
| 20 | | | | * | * | * | * | * | * | * | * | * | 1520 | 1140 | 1510 |
| 30 | | | | * | * | * | * | * | * | * | * | * | 1956 | 1552 | 1882 |

Rippers

36

50-1100 kg

Viking Equipments are designed for high breaking capacity. Maximum efficiency is achieved through a specially designed breaking plate and base plate. The SMP Ripper fits all excavators from 2-50 tonnes.



Technical specifications Rippers

| Model | E.g attachment | Tooth | Height(mm) | Approx weight (kg) |
|-------|---------------------|----------|------------|--------------------|
| T230 | SMP100/B30/S3/KM3 | CAT J550 | 1350 | 1100 |
| T180 | SMP100/B30/S3/KM3 | CAT J550 | 1250 | 830 |
| T100+ | SMP100/B30/S3 | CAT J460 | 1150 | 600 |
| T100 | SMP1 / B27 / S2 | CAT J460 | 1080 | 520 |
| T1 | SMP1 / B27 / S2 | CAT J350 | 1060 | 460 |
| T1 | SMP2 / B20 / S1/s60 | CAT J350 | 1060 | 400 |
| T2 | SMP2 / S60 | CAT J350 | 770 | 250 |
| T2 | SMP3 / S45 / S50 | CAT J350 | 740 | 200 |
| T3 | SMP4 / S40 | UNIZ-1 | 590 | 80 |
| T4 | SMP4 / S30 | UNIZ-1 | 430 | 50 |

Weights can vary depending on design of the product

Asphalt Cutters

Viking Equipments Asphalt Cutters have been developed for precision work, with a hardened steel disc with a diameter of 450 mm. The asphalt cutter is supplied with the most widely used attachments.

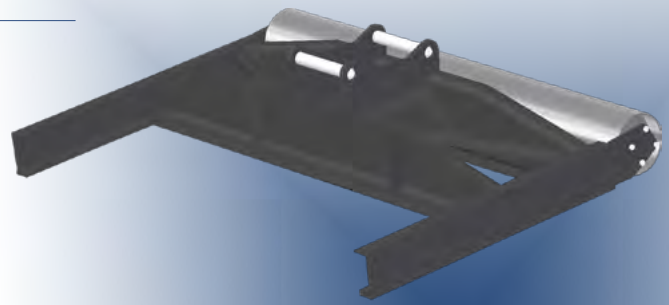


Technical specifications Asphalt Cutters

| Model | E.g attachment | Pulley dim.(mm) | Axle dim.mm (mm) |
|-----------|-------------------|-----------------|------------------|
| ASF Large | SMP1 / B27 / S2 | 450 | 50 |
| ASF Large | SMP1 / B20 / S1 | 450 | 50 |
| ASF Gate | S70 / S80 | 450 | 50 |
| ASF Gate | S60 | 450 | 50 |
| ASF Gate | S40 / S50 / S50 | 450 | 50 |
| ASF Small | SMP3 / SMP4 | 450 | 50 |
| ASF Tooth | Independent tooth | 450 | 50 |

Weights can vary depending on design of the product

The SMP rolling leveller for leveling out and compacting material when carrying out grading work. The rolling leveler has a solid construction which offers maximum strength and an even ground pressure for all job tasks.

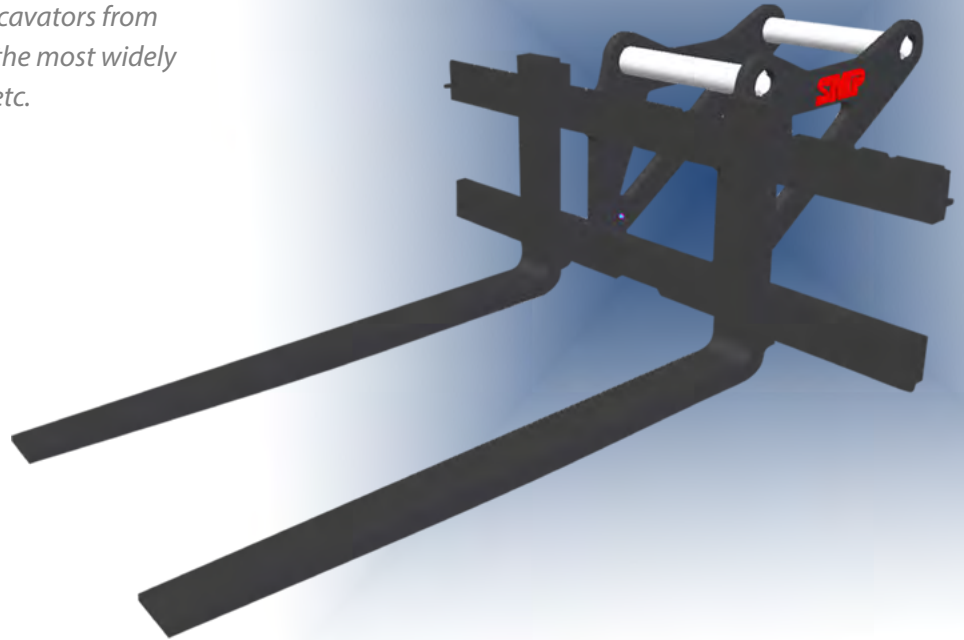


Technical specifications Levelling bar

| Model | E.g attachment | Width(mm) | Roller Ø mm |
|---------|----------------|-----------|-------------|
| AVB 230 | S40/45/50 | 2300 | 300 |
| AVB 250 | S40/45/50 | 2500 | 300 |
| AVB 230 | S60 | 2300 | 300 |
| AVB 250 | S60 | 2500 | 300 |
| AVB 270 | s60 | 2700 | 300 |
| AVB 230 | B20/S70 | 2300 | 300 |
| AVB 250 | B20/S70 | 2500 | 300 |
| AVB 270 | B20/S70 | 2700 | 300 |

2,5 - 5,0 tonnes

Viking Equipment Forklifts are ideal for easy handling of pallets. Suitable for loaders and excavators from 2 – 2,5 tonnes and are supplied with the most widely used attachments, e.g. S60, B20, BM etc.



Technical specifications Forklifts for excavators

| Model | Lifting Capacity (tonne) | E.g attachment | Fork (BxTxL mm) | Width(mm) | Approx Weight (kg) |
|---------|--------------------------|-----------------|-----------------|-----------|--------------------|
| | 2,5 | S40/45/50 | 100/40/1200 | 1300 | 220 |
| | 2,5 | S60 | 100/40/1200 | 1300 | 260 |
| | 2,5 | SMP2 | 100/40/1200 | 1300 | 300 |
| | 5,0 | S60 | 125/50/1500 | 1500 | 440 |
| | 5,0 | S70 | 125/50/1500 | 1500 | 440 |
| | 5,0 | B20/S1/KM1/SMP2 | 125/50/1500 | 1500 | 480 |
| | 5,0 | B27/S2/KM2/SMP1 | 125/50/1500 | 1500 | 520 |
| AVB 270 | | B20/S70 | 2700 | 300 | |

Technical specifications Forklifts for Loaders

| Model | Lifting Capacity (tonne) | E.g attachment | Fork (BxTxL mm) | Width(mm) | Approx Weight (kg) |
|-------|--------------------------|----------------|-----------------|-----------|--------------------|
| | 2,5 | L30/Trima etc | 100/40/1200 | 1500 | 120 |
| | 5 | BM | 125/50/1500 | 1500 | 190 |
| | 5 | BM | 125/50/1500 | 2200 | 270 |

Hydraulic Tree Cutter/Tree Cutter Adapter 39

240 / S45, S50

A Hydraulic Tree Cutter for clearing brushwood and small trees up to a diameter of 24 cm. The cutter can be combined with the SMP VikingWrist for optimal flexibility and better performance in hard to reach areas. The blade is made from Hardox steel and has a milled blade.



| Model Hammer weight (kg) | E.g attachment |
|------------------------------------|--|
| Weight (kg) | 205 |
| Hydraulic cylinder (mm) | Ø 100 / 63 x 222 |
| Max cutting diameter,machine (mm) | Ø 240 |
| Blade cutting power (21 Mpa) tonne | 11,2 |
| Recommended Pressure | Max 21 Mpa |
| Recommended oil flow l/min | 50 - 80 |
| Tooth system | 2 x KVM16 |
| Attachment Equipment Requirements | Swingotilt ST10, ST15, equipped with grab module and accumulator |

A Hydraulic Tree Cutter for clearing brushwood and small trees up to a diameter of 24 cm. The cutter can be combined with the SMP VikingWrist for optimal flexibility and better performance in hard to reach areas. The blade is made from Hardox steel and has a milled blade.



| Model Hammer weight (kg) | E.g attachment |
|-------------------------------------|---|
| Weight (kg) | 60 |
| Max cutting diameter, cylinder (mm) | Ø 80 |
| Max cutting diameter,machine (mm) | Ø 160 |
| Attachment Equipment Requirements | VikingWrist ST10 ST10,ST15, equipped with grab module and accumulator |
| Recommended Pressure | Max 21 Mpa |
| Bucket edge | 330 x 125 x15 |
| Tooth system | 3 x KVM16 |

Auger

40

We are an authorised partner to Digga, providing their entire range of attachments and wear parts. Suited to fit a wide range of machines and equipment, Digga products provide a quality, competitively priced option.



Clay Spade

Keen Attachments clay spade buckets are used for digging narrow trenches in clay or wet ground conditions. Our low profile design will fit excavators from 0.75 tonne to 30 tonne and widths can be customised to your specification.



Keen Attachments supply a range of compaction plates, an ideal solution for soil compaction on level or sloping ground. The relatively modest compression is compounded by the vibration element, resulting in a large working force that provides highly effective compaction.

Compaction plates come in a wide range of sizes, to cover excavators from 2 to 25 tonne. Keen Attachments can adapt compaction plates to fit all makes and models of excavator.



Compaction Wheel

Keen Attachments manufacture a range of compaction wheels to suit a range of machines.

The key benefit of using a compaction wheel is that the excavators own weight is used to deliver force. This provides up to 5 times better compaction performance when compared to a standard compaction plate or trench roller.

Its compact design is safer and more convenient, as it doesn't have a motor and has no hydraulic connections, resulting in no snagging in the trench, removing the need for an operator or labourer to observe during operation.

The simplicity of its design provides maximum performance and a more reliable product when compared to other products in the marketplace.



Keen Attachments manufacture a selection of demolition specification grapples to suit a wide range of machines. Fabricated from hardened steel where required and designed to withstand high levels of wear and tear.

We manufacture fabricated grapples to suit the following excavators:

7 TONNE 3/2 Finger

13 TONNE 3/2 Finger

20 TONNE 3/2 Finger

30 TONNE 3/2 Finger

40 TONNE 3/2 Finger

50 TONNE 3/2 Finger



Hammer Cradle & headstocks

Keen Attachments design and manufacture hammer cradles/headstocks in house.

We manufacture hammer craddles and headstocks from 0.75 tonne to 50 tonne to fit all hydraulic and manual attachments. They can be supplied direct or quick hitch mounted to suit your requirements.



Manual Auto Lock Hitch

43

We also offer a new auto lock manual hitch available to suit most excavators up to 7 tonne. The semi-automatic version locks itself, removing the need for you to leave the excavator to lock the hitch onto attachments.

All hitches are checked for quality and ease of fit before despatch and carry a one year warranty. Available for excavators up to 7 tonne, most types are ex-stock and if we don't have the one you require we can usually manufacture within 5 working days.



Pole Lifter

Keen Attachments pole lifters can be mounted on excavators of any size. Available in a range of lengths to suit different applications, with a range of diameters to suit the appropriate weight lifting requirement.

All Keen pole lifters are tested with a safe working load from 1 tonne to 10 tonne. They are ideal for the rehandling of large spherical items. Pole lifters offer a safe and accurate way to manoeuvre items at ground level or into trenching



Keen Attachments supply demolition crushers to demolish armed concrete structures, reducing noise and vibrations. Our range of crushers have a wide range of weights from 100kg to 2100kg.

Highly reliable, and considered amongst the most reliable on the market, they are entirely manufactured with hardened steel (to resist against abrasion), hydraulic cylinders with hardened stem and most benefit from a 360° rotation.

Keen Attachments range for mini-excavators caters from 2.5 to 6 tonne, and have a solenoid valve which allows use of both of the functions of the crushers (demolition and rotation) using a single hydraulic line.

Several models benefit from an accelerator valve that allows you to increase the closing speed of the crusher and reducing the time needed to do the job. All of the models with hydraulic rotation have a valve regulating the speed of rotation which is easy to set considering the needs of the user.



Designed with operator and site safety in mind where attachment changes are completed safely without leaving the cab.

Both front and rear attachment pins are independently mechanically locked through the full working cycle, both front and rear attachment pins are independently hydraulically released by the coupler. Suitable for excavators from 2 tonne to 100 tonne.



Land Rake

Keen Attachments design and manufacture land rakes for all excavators from 0.5 tonne up to 50 tonne.

Manufactured in a range of widths and tine spacings to suit all applications. Our rake legs are profile cut from hard wearing materials and designed to minimise clogging and pull.

Rakes are ideal for construction and landscaping situations and can be used for raking stone, brambles, brash etc.

We are able to manufacture to any width or height, and are now able to offer a tilting rake riddle bucket.



Keen Attachments supply selector grabs covering models from 1.5 to 50 tonne.

Designed to be extremely versatile, excellent both for the demolition of structures and buildings without reinforced concrete, for the recycling and the selection and the movement of demolished materials.

All the models are equipped with a 360° rotation, to simplify the operations of movement and also to allow the operator the possibility to work in non-optimal conditions. The jaws are entirely built in special high resistant steel, to guarantee great resistance to abrasion and therefore longer life of the equipment.



Steel Shear

Keen Attachments supply hydraulic steel shears suitable for demolition of iron structures. Compact, strong and entirely built with special steel to resist against abrasion, perfect for customers that need to cut iron boxes, iron rods and the reinforcing in reinforced concrete as well as other applications related to the recycling of iron materials.

The SCR range is actually made of two models, SCR 250 and SCR 750, for excavators from 2,5 tonne to 13 tonne; both of them have a 360° hydraulic rotation, plus an electro-valve which allows to use both of the functions of the shear (demolition and rotation) using a single hydraulic line.

We are also able to supply the latest multi-processor models, providing attachments for excavators from 8 tonne to 50 tonne, developed for cutting road barriers



Keen Attachments manufacture a range of grapples to suit a wide range of machines. Ideal for rehandling a wide range of materials including general waste and forestry.

Our solid tine attachments are manufactured in a variety of sizes to suit a range of machines with the option of a 4/3 finger on some sizes.

1-2 TONNE 3/2 Finger

2-3 TONNE 3/2 Finger

4-5 TONNE 3/2 Finger

4-5 TONNE 4/3 Finger

6-8 TONNE 4/3 Finger

13 TONNE 4/3 Finger

20 TONNE 3/2 Finger



Keen Attachments are leading manufacturers of pallet forks. Available to fit 4 to 50 tonne machines.

The pallet forks give your excavator all the material handling capability of a teleporter, without the capital cost - working perfectly with the Keen quick hitch.

We offer two types of fork carriages - cassilated (for 4-20 tonne) and Bar type (for 4-50 tonne).

Pallet forks offer easier access and manoeuverability on site, than with a standard teleporter, moving bulky palletised material quickly and easily.

Our pallet forks benefit from fully adjustable flexible pin arrangements which allows pallet forks to fit a large variety of excavators. The Cassiated forks offer a storage compartment for secondary pins, integrated in the frame of the pallet forks.

Keem pallet forks are fully tested products, ensuring maximum safety on site, available for dedicated carriers or universal forks to suit 5-8 tonne, 8-15 tonne or 13-20 tonne.



Keen Attachments manufacture a range of grading beams in a widerange of sizes. They can work in conjunction with tilt rotators or the conventional UK designed quick hitch.

Grading beams consist of a strong steel structure which include steel beams which level the grading surface, followed by a rear section that houses an adjustable steel roller that compacts the surface.

They offer a more efficient way to level and compact ground when compared to traditional method

Standard sizes:

S30 = 1500mm wide

S40 = 2000mm wide

S45 = 2000mm wide

S50 = 2500mm wide

S60 = 2500mm wide

S70 = 2500mm wide

S70 = 3000mm wide



Scraper Blade

Ideal for maintaining a clean and safe working environment on site, scraper blades are the perfect solution when working in a built up area.

A hard wearing rubber blade reduces noise. Mounted on a pivot, it works well with uneven ground, maintaining contact and increasing efficiency whilst removing excess moisture.



Brush Bucket

50

Ideal for maintaining a clean and safe working environment on site. Brush buckets can be fitted to all excavators and available in a variety of sizes including 900mm, 1200mm, 1500mm and 1800mm. Manufactured from heavy duty nylon brushes, mounted on a hard wearing steel casing.

Brushes can be removed and replaced to maintain efficiency and extend the life of the product.



Bucket Lifter

Keen Attachments bucket lifting attachment has been designed for operators and yard people to easily and safely handle and manoeuvre buckets around yards.

It can be operated by a single person, increasing efficiency whilst not compromising on safety.



Notes

[illegible]

Notes

[illegible]

Notes

[illegible]



VIKING EQUIPMENT INC



Viking Equipment Inc
2014 4th St Sarasota
FL 34237

David Esposito
Vice President of North American Operations

david@viking-equipment.com
904.509.6035

www.viking-equipment.com